

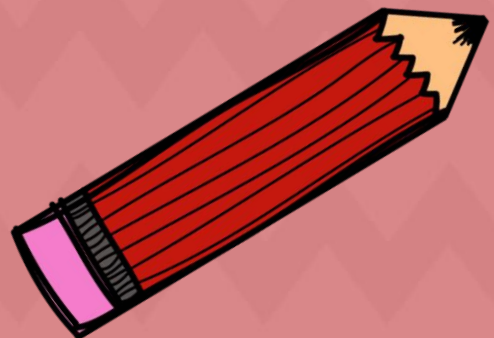
SUMAS HASTA EL 20

$14+2=16$

$15+5=20$

$12+6=18$

$10+3=13$



SUMAS HASTA EL 20

6

+

6

=

7

+

7

=

4

+

4

=

5

+

5

=

8

+

8

=

9

+

9

=



16

14

12

10

8

18

SUMAS HASTA EL 20

5

+

6

=

6

+

7

=

7

+

8

=

8

+

9

=

9

+

10

=

11

+

5

=



16

19

17

15

13

11

SUMAS HASTA EL 20

8

+

6

=

9

+

7

=

10

+

8

=

2

+

9

=

5

+

10

=

12

+

5

=



14

16

18

11

15

17

SUMAS HASTA EL 20

$2 + 6 = \square$

$4 + 7 = \square$

$6 + 8 = \square$

$8 + 9 = \square$

$10 + 10 = \square$

$12 + 5 = \square$



17 20 17 14 11 8

SUMAS HASTA EL 20

1

+

6

=

3

+

8

=

5

+

10

=

7

+

12

=

9

+

5

=

6

+

6

=



12

14

19

15

7

11